

N3031 IR Dome Network Camera



3 Megapixel / H.264 / 1080P Real-Time / D-WDR / Auto-IRIS

- 3 Megapixel 1/4" CMOS Sensor in High Resolution
- H.264/MJPEG Dual Codec & Streaming simultaneously
- Vari-Focal Lens 3-10mm F1.6
- 3-Axis Mechanical Design for Ceiling Installation
- QXGA (2048x1536@22ps) / 1080P(1920x1080@30fps)
- Digital I/O for External Sensor and Alarm
- Mechanical ICR
- Built-in IR Illuminator
- Auto-IRIS
- Digital Powerful WDR
- 3D Noise Reduction
- 2 Way Audio Supported
- Intelligent Video Analytics
- IP68 Water and Vandal Proof
- PoE Power Over Ethernet IEEE802.3af (Option)
- Micro SD Card Supported (SDHC up to 32GB)



Specifications

Camera

Sensor	3 MegaPixel 1/4" CMOS sensor
Scan Method	Progressive
Lens	Vari-Focal Lens 3-10mm , F1.6
Number of Effective Pixel (H*V)	2048x1536
Minimum Illumination	0.1Lux (F1.6, AGC max.)0Lux (IR On)
Horizontal Resolution	1400TVL
Wide Dynamic Range	High/Middle/Low, 3 steps selection
Dynamic Range	69db@8xGain
SNR(max)	37db
White Balance	Auto
Gain Control	High/Middle/Low, 3 step selection
Flicker Control	Off/50Hz/60Hz, 3 steps selection
Electronic Shutter	Auto/Manual (1/30, 1/100, 1/500, 1/1000, 1/2000, 1/5000, 1/10000)
Panning Coverage	-174°~ 174°
Tilting Coverages	0°~ 65°
IRIS Control	Auto

IR Illuminators

Day and Night	IR-Cut Filter Removable (ICR)
Wavelength Range	850nm
Distance	Up to 15M
Beam Angle	25°

Video

Video Compression	H.264 (MPEG-4Part 10/AVC)/MJPEG,Dual codec
Video Framerate	2048x1536@22fps/1920x1080@30fps
Resolution	H.264 : 3M(2048x1536@22fps) 2M(1600x1200@22fps) 1080P(1920x1080@30fps) 720P(1280x720@30fps) MJPEG : 1.3M(1280x960@15fps) 1080P(1920x1080@15fps) 720P(1280x720@15fps)
Bitrate control	CBR and VBR, 128kbps~8Mbps
Multi-streams	Dual streaming, Multiple profiles 1920x1080 H.264@30fps/720x400 H.264(Sub) @30fps/1920x1080 MJPEG@15fps 2048x1536 H.264@22fps/640x480 H.264(Sub) @22fps/1280x960 MJPEG@15fps
Digital Zoom (PC side)	1/4X, 1/3X, 1/2X, 1X, 2X, 4X
Image Rotation	Mirror, Flip, Rotate 180°

Intelligent Video

De-noise	Yes
Motion detection	Yes
Blind detection	Yes
Privacy Mask	Yes

Audio

2 Way Audio	Audio Line-in, Audio Line-out
Compression	AMR, G.711 @ 64kbps, G.726 @ 32kbps/ Configure bit rate

Network

Streaming Protocols	RTSP/RTP/UDP, RTSP/RTP/TCP, RTSP/RTP/HTTP tunneling, LAN Multicast, Multipart-JPEG
Supported Protocols	IPv4, IPv6, HTTP, UDP, TCP, ICMP, IGMP, ARP, DHCP, NTP, SMTP, FTP, SAMBA, UPnP, PPPoE, DNS, DDNS, RTSP, RTP, RTCP, ONVIF
3GPP Mobile Surveillance	Yes

Storage

External	1 x Micro SD Card (SDHC up to 32GB)
----------	-------------------------------------

Processors and Memory

CPU	ARM9 SOC 800Hz
Flash and Memory	16MB ROM, 256MB DDRIII

I/O and Connectors

LAN	1x RJ-45 Ethernet connector
Audio	1x Audio Line-in, 1x Audio Line-out
Alarm I/O	1x Alarm-in (2pin), 1x Alarm-out (3pin)
Serial Port	RS485 (2pin)

Software Compatibility

Browser	Internet Explorer 6.0 or above
Application Software	VMS Application Software
OS supported	Microsoft Windows 2000, XP, Vista, Windows 7

Open API

	CGI commands to control camera Media SDK to handle streaming
--	---

Factory Default

	Button
--	--------

Power

Power Input	DC 12V, DC12V/ POE
Power Consumption	7.8W/4.2W(IR off)

Demension

	144.3mm(Φ)x 115mm(H)
--	----------------------

Weight

	880g
--	------

Operating Environment

Operating temperature	-20°C~ 50°C
Storage temperature	-30°C~ 60°C
Storage humidity	0% ~ 95% Non-condensing

Certification

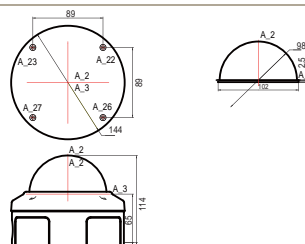
	CE, FCC Class A, RoHS, IP68, IK10
--	-----------------------------------

Warranty

	24 months
--	-----------

Member of

Dimension Diagram



Distributed by:

3S PocketNet Technology Inc.

7F., No.5, Lane 16, Sec. 2, Sichuan Rd. Banqiao Dist.,
New Taipei City 22061, Taiwan (R.O.C.)
Tel: +886.2.8967.2909
Fax: +886.2.8967.2779